

# Environmental Management Report – Pakenham Quarry

For Period 14<sup>th</sup> May 2008 – 14<sup>th</sup> June 2008



Compiled by A.Price

## Abstract

As the content of this report demonstrates, Cemex Pakenham has implemented a systematic, whole of site approach to environmental management and compliance with conditions of the *Mt Shamrock Quarry Environmental Management Plan Version 1: 18 January 2008*. All employees and contractors on site are aware of the necessity to conduct operations with minimal disruption to the environment and the local community. Monitoring results reflect this commitment by complying with and surpassing the standards required. The site is on track in relation to scheduled works as per the Environmental Management Plan. All non-compliances and complaints have been documented and any appropriate remedies actioned.

This report provides graphical summaries of all results obtained during the relevant monitoring period. These graphical summaries indicate averages and data trends. Any results obtained that fall outside the required standards are reported in the *Non- Compliances* section.

## Activity Synopsis

- Surface extraction works on Phase One of the extension are progressing well. This month approximately 135,000 cubic metres of overburden have been extracted.
- Depositional dust monitors have been installed to provide preliminary results at locations A1 – A6.
- First shots have been fired in the extension area and released good quality rock for processing

## EMP Variances

Variance	Reason
Weather Monitoring Station not installed in pit manager's office. (2.1.3)	Awaiting delivery and installation of equipment. Approximately 4 – 6 weeks.
No dust monitoring (other than depositional monthly) in place. (2.1.4)	Awaiting delivery and installation of equipment. Approximately 4 – 6 weeks.
There has been no quantifiable targets set for waste minimisation	Awaiting outcome of report by S. Jenkins from Envirorisk.

## Non-Compliances and Complaints

There were no results obtained during this reporting period that did not fall within the standards set out in *Mt Shamrock Quarry Environmental Management Plan Version 1: 18 January 2008*. There were no complaints received in this reporting period.

## Environmental Monitoring Results

### Results Synopsis

Results obtained during this period complied with the standards set out in *Mt Shamrock Quarry Environmental Management Plan Version 1: 18 January 2008*. Airborne dust monitoring was limited due to delays in delivery of equipment (refer EMP Variances).

## **1.1 Rehabilitation and Vegetation**

Weed control contractors carried out visual inspection and spraying during appropriate periods.

### **2.1.4 Air Quality – Dust**

There is no monitoring data to report at this time.

### **2.2.4 Operating Noise**

Due to the continuance of near surface extraction (overburden removal) all sensitive locations are monitored on a daily basis. All locations returned LAeq levels lower than the standards set out in *Mt Shamrock Quarry Environmental Management Plan Version 1: 18 January 2008*. At the date of this report there had been no complaints in relation to operating noise and therefore no noise level monitoring at a complainant's residence. Refer to Figure 1.1

### **2.3.4 Blasting**

Ground Vibration and Air Blast measurements conducted by specialist consultants were all within required standards as per *Mt Shamrock Quarry Environmental Management Plan Version 1: 18 January 2008*. Refer to Figures 1.2, 1.3.

### **2.4.4 Surface and Ground Water**

Visual inspections have been carried out of Dams 1 & 2, Settlement Ponds 1 & 2, Donnazan's Dam and the EPA sampling point. Visual inspections have also been completed of the spillway at Donnazan's dam for erosion. There has been no discharge over the spillway at Donnazan's dam during this period.

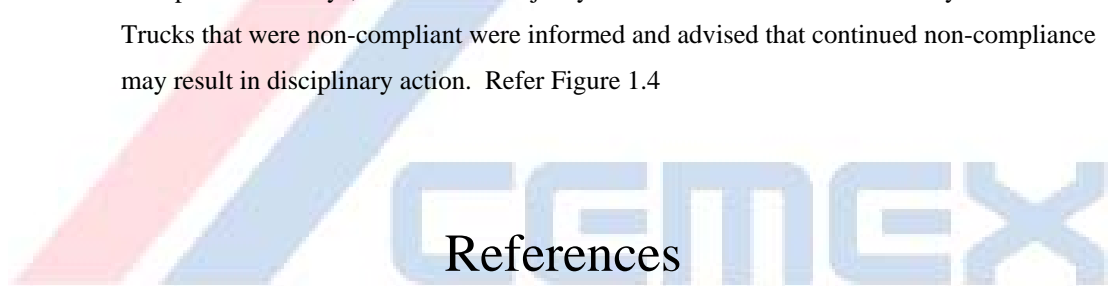
#### **2.5.4 Slope Stability**

Visual inspections of all the landslips in Toomuc Valley have been carried out after each blast. Visual inspections of the Toomuc Valley landslips were also carried out after each instance of heavy rainfall during this period. There were no morphological variances detected in the landslips as a result of these inspections. Visual inspections have been carried out of vegetation in these areas. All vegetation is healthy and growing well. Visual inspection of Overburden stockpiles, crushed stockpiles and operating faces are completed daily by operators of heavy equipment.

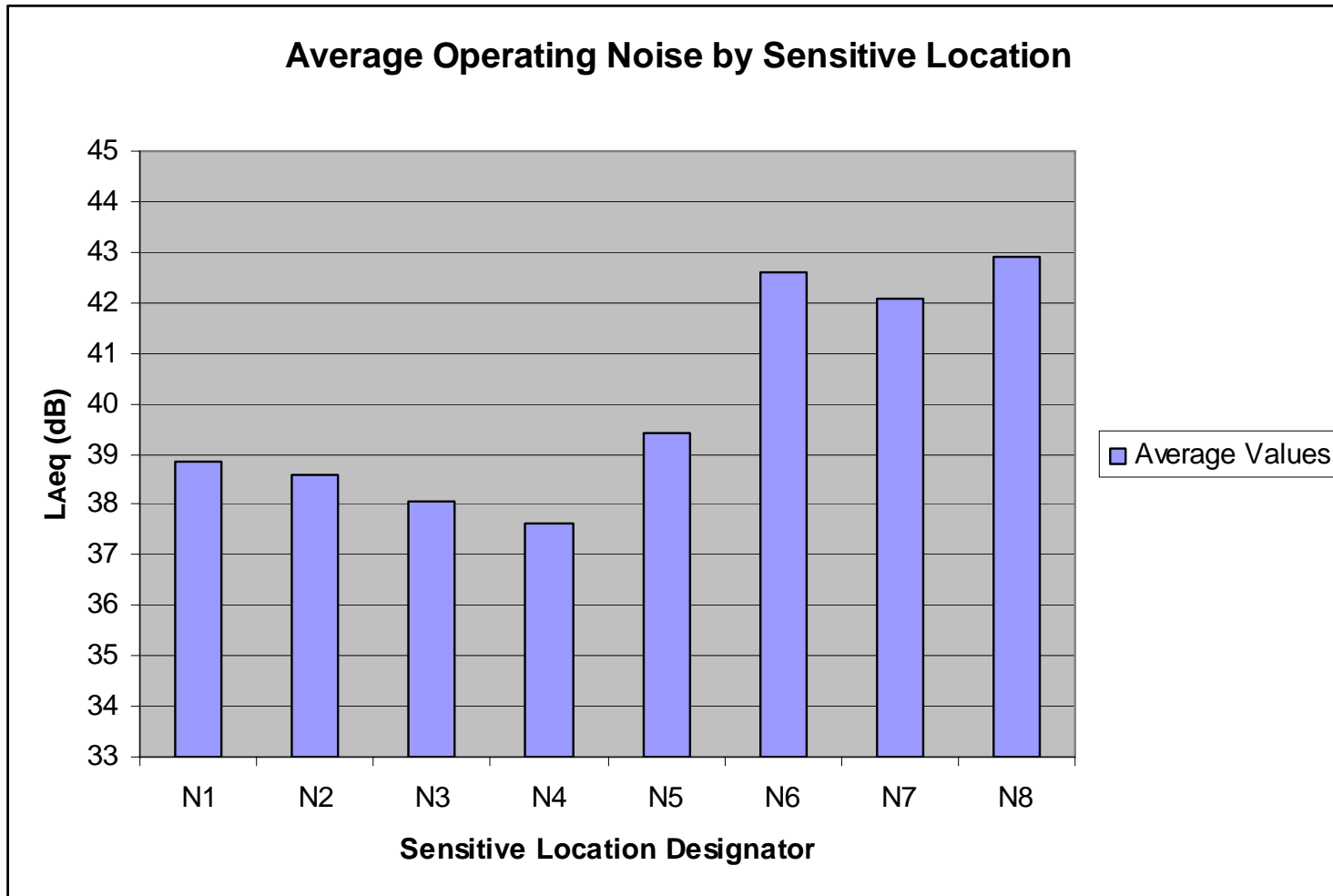
#### **2.7.4 Traffic Management**

Evaluation of trucks leaving the site concluded that there is minimal material being tracked onto public roadways, that the vast majority of loads are covered and correctly loaded.

Trucks that were non-compliant were informed and advised that continued non-compliance may result in disciplinary action. Refer Figure 1.4



Rinker Australia, 2008, *Mt Shamrock Quarry Environmental Management Plan*, Version 1: 18 January 2008, Pakenham



**Figure 1.1: Average Daily Values for Noise Monitoring of Sensitive Locations**

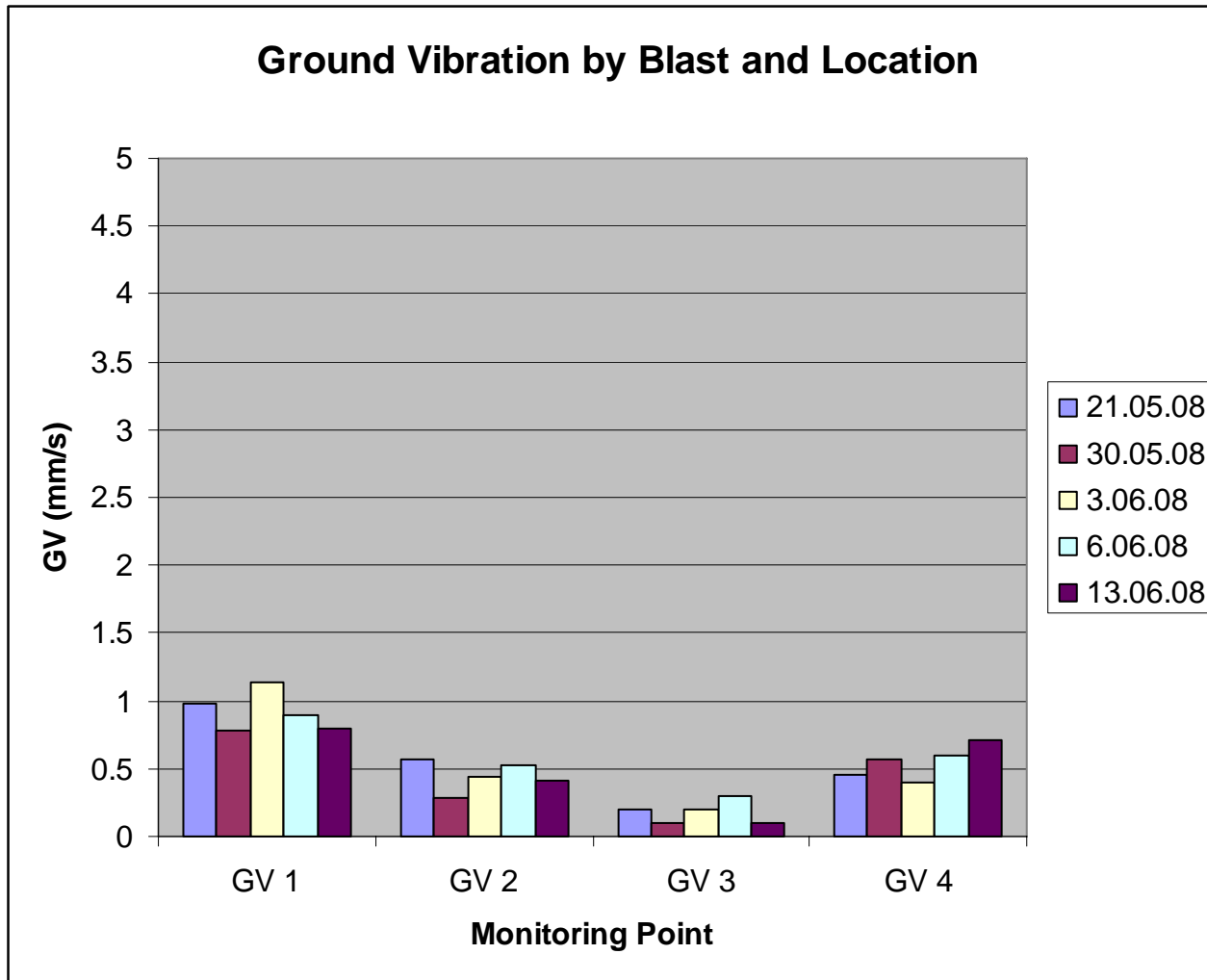


Figure 1.2: Ground Vibration by monitoring location and blast date. (Allowable Limit 5 mm/s)

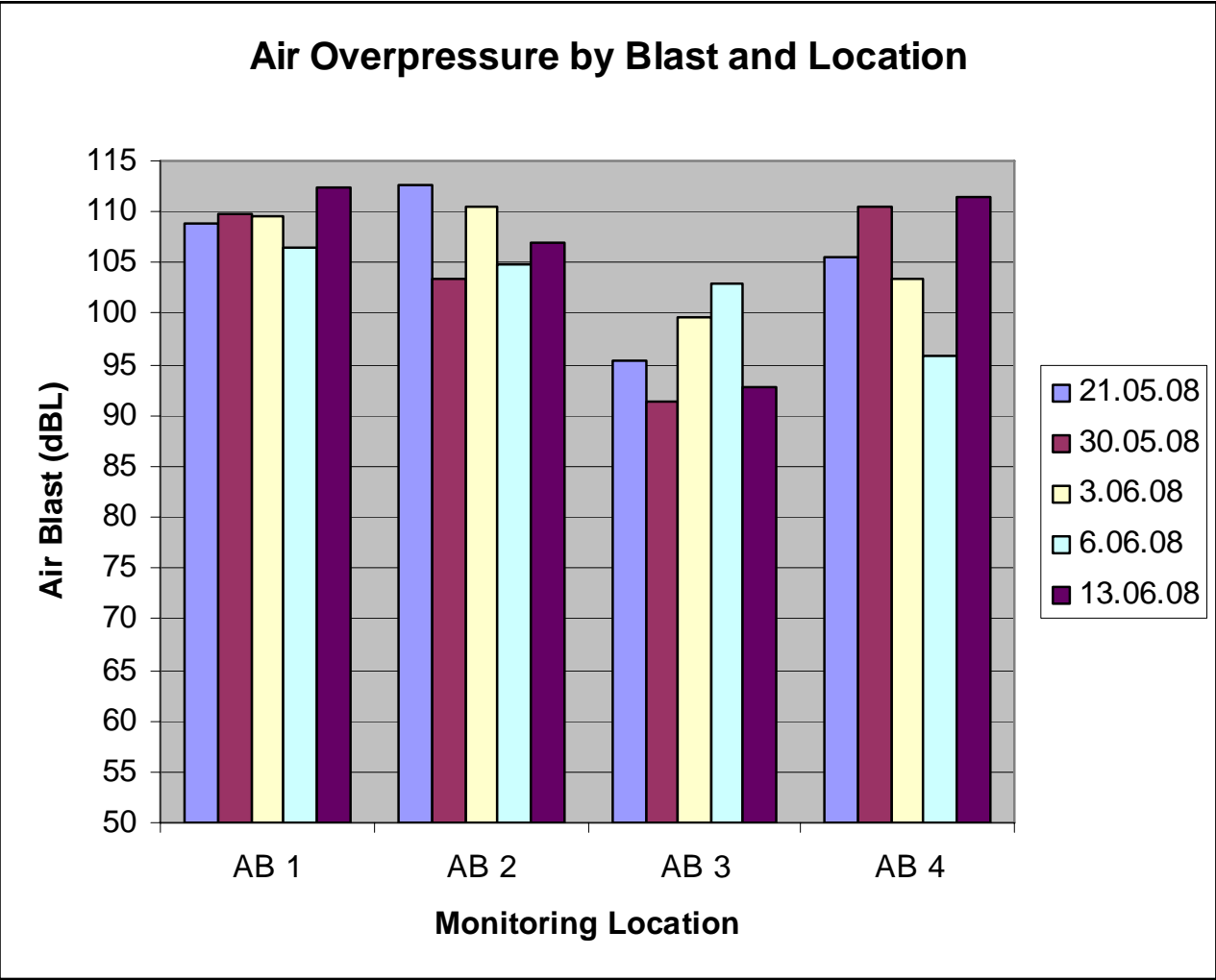
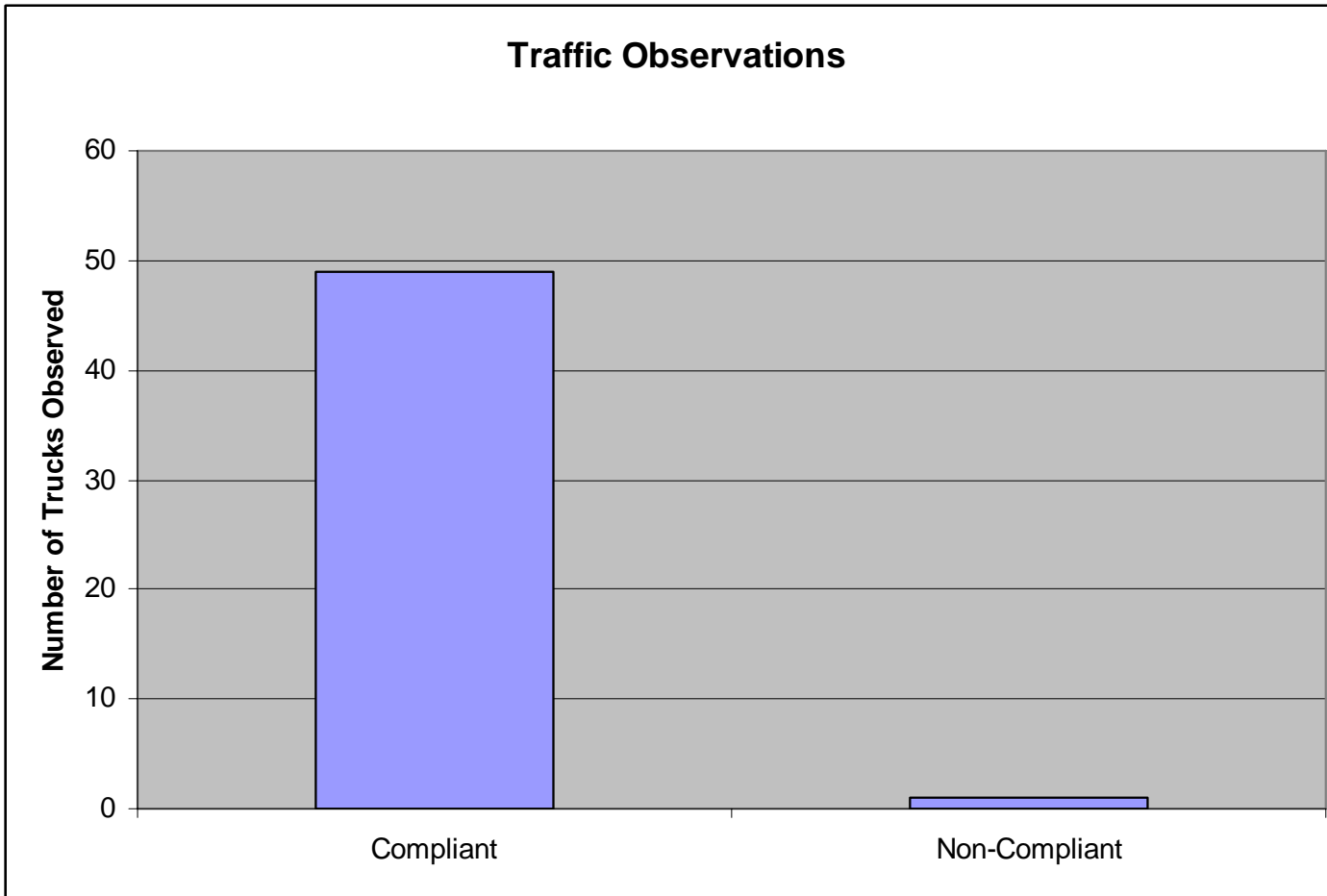


Figure 1.3: Air Blast by monitoring location and blast date. (Allowable Limit 115 dBL)



**Figure 1.4: Traffic Observations for reporting period**